



TRAFLEX

Pillar

About us

Traflux is a globally active **family-owned company**. From our Belgian headquarters in Houthalen-Helchteren, we develop and manufacture (semi-)underground waste containers. Thanks to a unique combination of innovative designs, high-quality materials and advanced technologies, we offer waste solutions ranging from 100 to 5,000 litres for every sector.

From our 8,000 m² production facility, equipped with state-of-the-art machinery, we provide **global distribution** to more than 30 countries. In addition, Traflux operates its own collection company in Belgium. Every day, our drivers empty more than 1,200 containers. Their experiences help us continuously improve our products.

Traflux considers reducing **ecological impact** as a priority. We generate more electricity with our solar panels than we consume. Furthermore, we consciously choose sustainable, recycled and environmentally friendly materials. For instance, our containers comply with EN 13071 standards, our lifting bags with ISO 21898 standards and our wood is PEFC certified. We operate in accordance with ISO 9001 and ISO 14001 standards.

At Traflux, everything is centred around these core values:

- T**eamwork
- R**esult
- A**uthenticity
- F**lexibility
- L**oyalty
- U**nique
- X**-Factor



TRAFLUX

Why choose a Pillar waste bin?

TRAFLEX

The Pillar is a street bin designed for cities, municipalities, sports fields, and recreational parks. It ranges from a street bin to a semi-underground container, with capacities from 100 to 200 litres. 100% tailor-made in Belgium.

BENEFITS

- The Pillar waste bin is made of **stainless steel 304** and securely anchored with a concrete base. Its **angular shape** ensures a strong and solid structure, making it significantly more durable than a regular waste bin.
- The **insertion opening** is designed to allow small waste items, such as cans, paper bags, and drink cartons, to be easily disposed of. Its size also prevents larger waste items from being deposited.
- The studded structure and **graffiti-resistant coating** protect the waste bin from vandalism, graffiti, and stickers. Additionally, the inner container is fire-retardant.
- The innovative design gives the Pillar an elegant look. The standard color is grey, but it can be customised in various **RAL colors**.
- Tired of cigarette butts littering the area? Opt for a **built-in ashtray**. This sturdy metal container is ingeniously simple.

SAFE AND PRACTICAL

- The container's exterior consists of **two identical stainless steel parts**, securely joined with multiple sturdy hinges and a solid lock.
- The collection bin is equipped with **ergonomic handles**, ensuring easy emptying of the Pillar, even in rainy weather.

Built-in ashtray



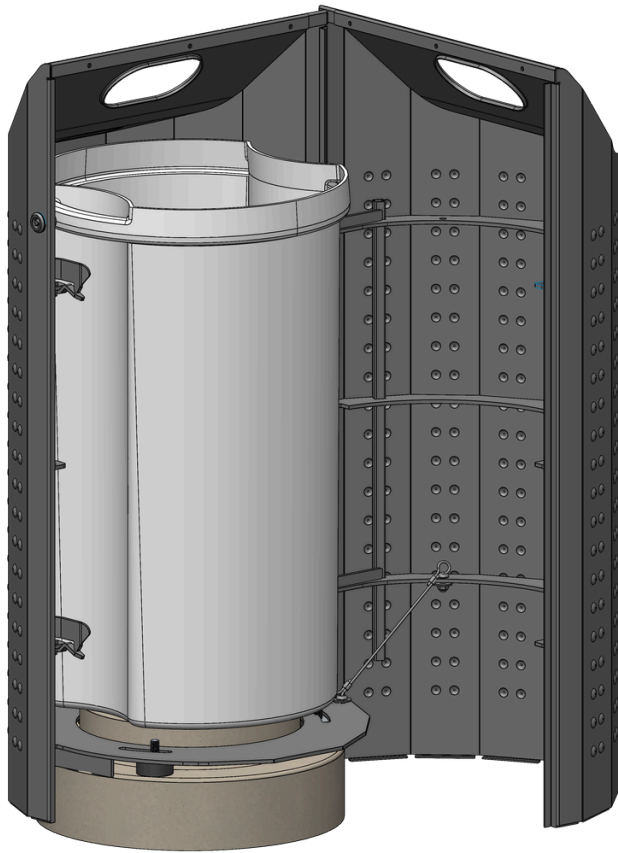
Stainless steel protects against vandalism, graffiti & stickers



Personalise with different RAL colors



TRAFLEX



Pillar 100L

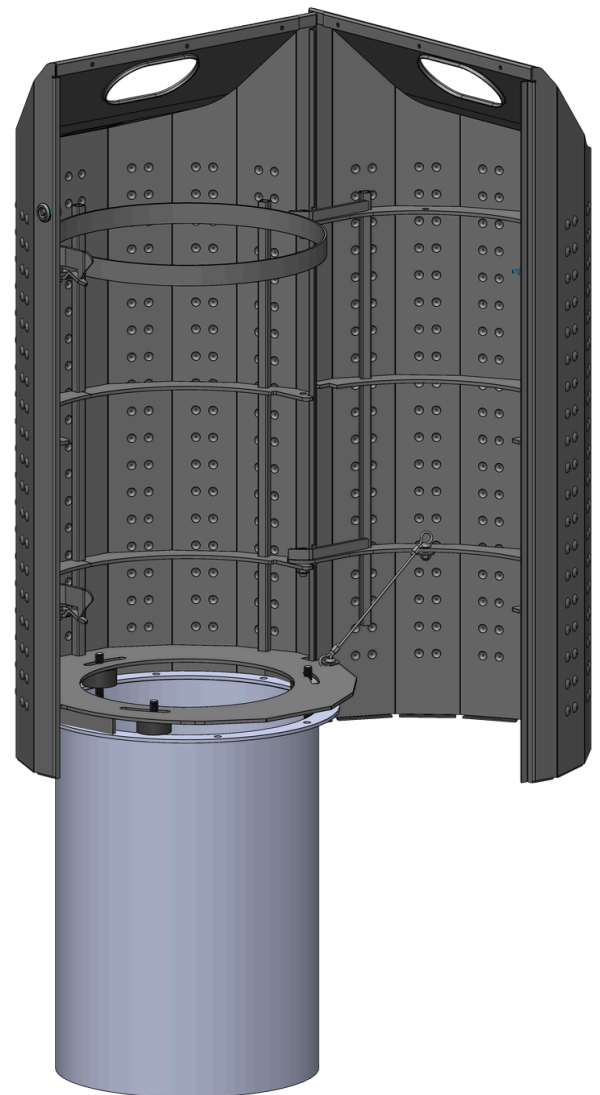
Emptying the Pillar 100L is easy, thanks to the inner bin's ergonomic handles, which ensure a comfortable grip. Even in rainy weather. A steel cable prevents the Pillar from opening more than 180° and damage. In addition, the inner bin is made of fire-retardant material.

The base of both Pillars is fitted with rubber shock absorbers, providing flexibility and reducing the risk of breakage.

Pillar 200L

Unlike the Pillar 100L, the Pillar 200L is equipped with two rings to which a waste bag can be attached. As a result, the Pillar 200L is not compatible with the collection bin. The waste bag can be easily detached from the rings and pulled out of both the pillar and the underground section. After emptying, a new bag can be installed.

A steel cable prevent the Pillars from opening more than 180° and cause damage.



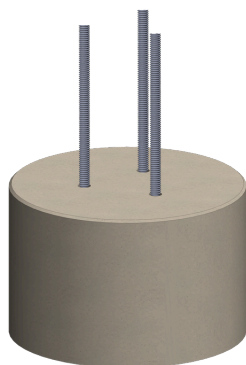


Highlight your organisation with the advertising panel

Do you need a fraction plate or extra visibility? Then the optional advertising panel on the Pillar offers the perfect solution. The panel can be fitted with eye-catching stickers on both sides, completely tailored to your style.

No cigarette butts on the street

It is normal to have waste containers in public places. But what do we do with cigarette butts? Here, too, Traflux offers an elegant solution: the Pillar with built-in ashtray. A simple but ingenious solution; the butts are collected in a sturdy metal container that is easy to empty with a simple action.



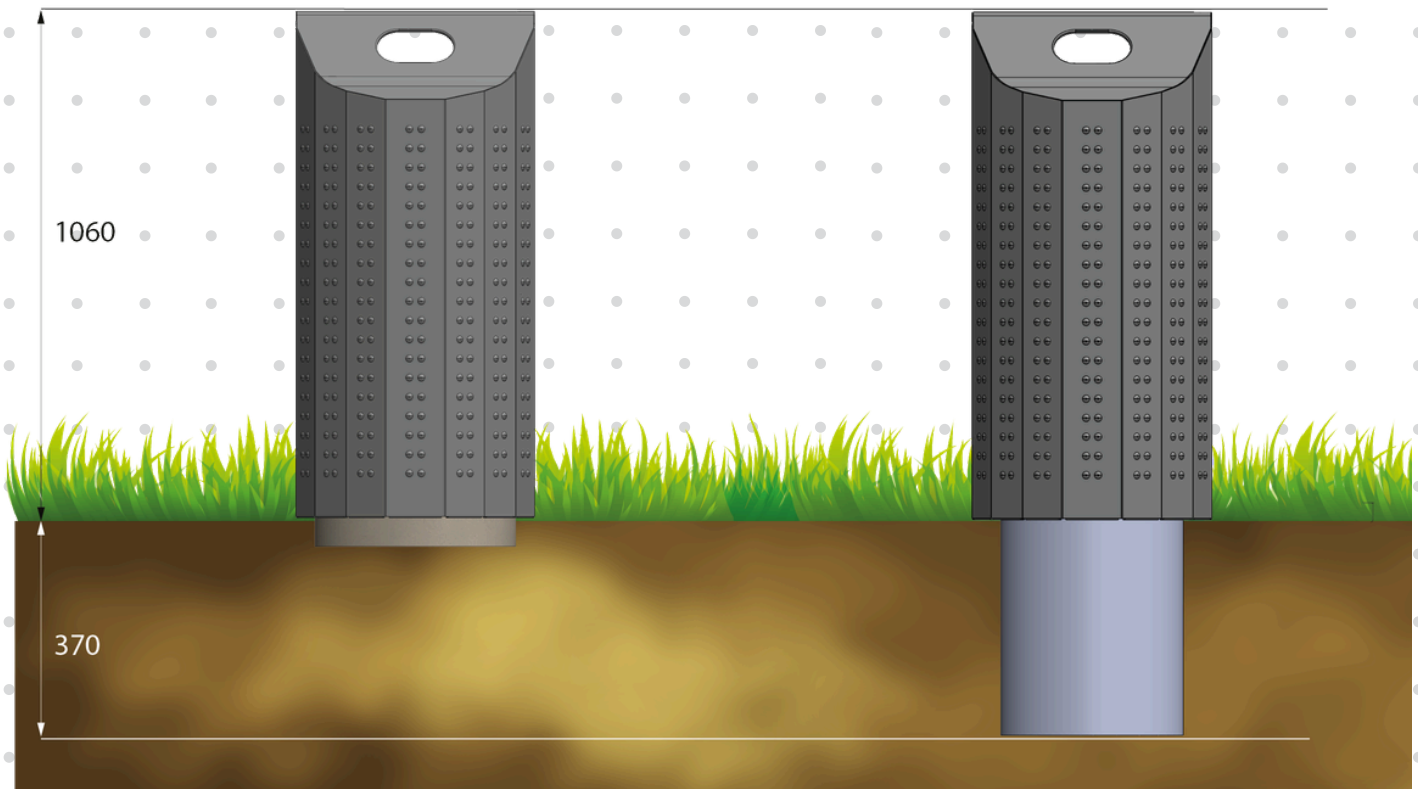
A solid base

For installation of the Pillar 100L in soft ground, the lower base is indispensable. This block forms the solid base on which the upper base is placed. The Pillar 100L can then be easily and securely attached to the upper base, ensuring a stable and durable anchoring.

A colour that suits your surroundings

The Pillar comes standard in a grey colour, matching any environment. However, do you want your Pillars to really stand out or perfectly match the style of your municipality or organisation? Then the Pillar can be fully personalised in any RAL colour. This not only gives you a unique look, but also strengthens the recognisability of your public space.





Pillar 100L standard model

Height: 1060 mm

Width: Ø 475 mm

Weight: 90 kg

Waste types:

- Mixed
- Paper
- Plastic
- Glass

Pillar 200L semi-underground model

Height: 1060 mm (above ground)
+ 370 mm (underground)

Width: Ø 475 mm

Weight: 60 kg

Waste types:

- Mixed
- Paper
- Plastic
- Glass

References

TRAFUX



TRAFUX

TRAFFLUX

YOUR WASTE OUR PASSION

TRAFLUX

Europark 1003, 3530 Houthalen-Helchteren

Belgium

Tel.: +32 11 51 62 70

Mail: info@traflux.com

Website: www.traflux.com

