

TRAFLUX



RBin



About us

Traflux is a globally active **family-owned company**. From our Belgian headquarters in Houthalen-Helchteren, we develop and manufacture (semi-)underground waste containers. Thanks to a unique combination of innovative designs, high-quality materials and advanced technologies, we offer waste solutions ranging from 100 to 5,000 litres for every sector.

From our 8,000 m² production facility, equipped with state-of-the-art machinery, we provide **global distribution** to more than 30 countries. In addition, Traflux operates its own collection company in Belgium. Every day, our drivers empty more than 1,200 containers. Their experiences help us continuously improve our products.

Traflux considers reducing **ecological impact** as a priority. We generate more electricity with our solar panels than we consume. Furthermore, we consciously choose sustainable, recycled and environmentally friendly materials. For instance, our containers comply with EN 13071 standards, our lifting bags with ISO 21898 standards and our wood is PEFC certified. We operate in accordance with ISO 9001 and ISO 14001 standards.

At Traflux, everything is centred around these core values:

- T**eamwork
- R**esult
- A**uthenticity
- F**lexibility
- L**oyalty
- U**nique
- X**-Factor

TRAFLEX

Why choose a semi-underground solution?



Size does matter

The figure below clearly demonstrates: size does matter. Fewer containers are required, and the time needed to collect and remove waste is reduced. This lowers both investment and collection costs. Large volume, compact design.

Efficiency & Comfort

The efficiency of the semi-underground concept lies not only in the ease with which these containers are emptied, but also in the minimal surface area required for their installation.

Environment

We strongly believe that, as a producer, we have an environmental responsibility. Our products are made from concrete, highly durable plastic and environmentally friendly materials. We keep logistics efficient by operating our production plant in Belgium. The plant is completely self-sufficient in electricity thanks to solar panels on the roof.

Quality & Reliability

We exclusively use high-quality materials selected for their durability. Our concrete pit offers high stability, and we use either aluminium or stainless steel to prevent corrosion. Our containers are seamless and feature double-walled lids.

Adaptability

At the outset, it is possible to store one waste fraction in the RBin. If there is a need for multiple waste fractions, or if there is less demand for a single fraction, the RBin can be easily adjusted to store two or three waste fractions. Of course, the reverse can also be done. In short, the RBin is flexible and can be adapted to future needs.

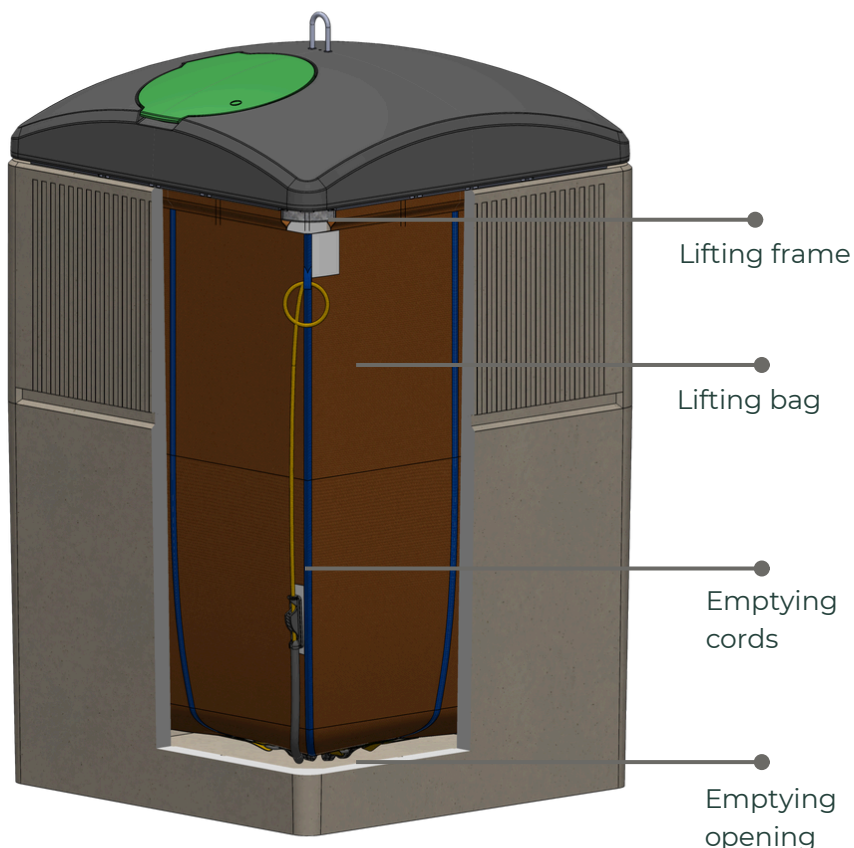
Safety & Ergonomics

Ergonomics plays a significant role in the functionality and user experience of the RBin. With all elements seamlessly integrated for a safe and user-friendly experience. The built-in barrier of at least 800mm in height ensures that safety remains when the semi-underground containers are emptied, enhancing operator safety.



Comparison between 1x RBin = 6x 1100L wheelie bins or
24x 240L wheelie bins





Quality

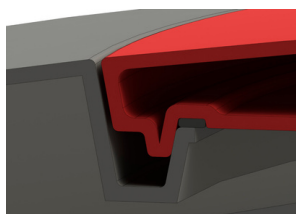
Traflux's RBin is made from the highest-quality materials, with each component designed for durability. The concrete pit is built according to the latest standards and newest technologies. Additionally, the RBin has been carefully engineered to maximize capacity while keeping the weight down.

Emptying

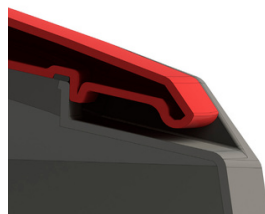
The RBin is equipped with an internal lifting bag / container, making waste removal effortless. This design ensures the RBin is suitable for almost any fraction of waste. The container can be used for paper / cardboard, plastics, glass, biowaste, residual waste, ...

Design

The RBin requires no extra decoration. Its smooth, ribbed concrete provides a sleek look and there is no extra installation of decoration needed. Fewer components mean greater durability, less maintenance, and fewer worries. Making it an environmentally friendly choice.

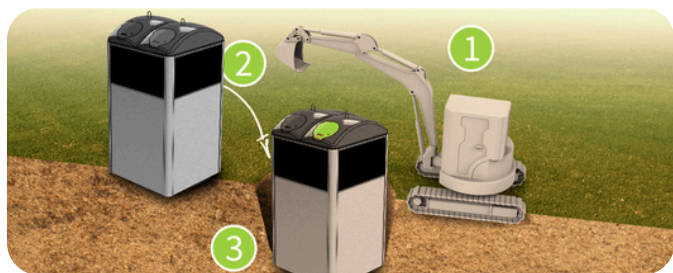


Detail section:
"odour lock"



Ergonomic handle detail
(fully integrated into the lid)

Installation



1. Dig a hole.
2. Place the RBin in the hole.
3. Fill the hole.

Collection

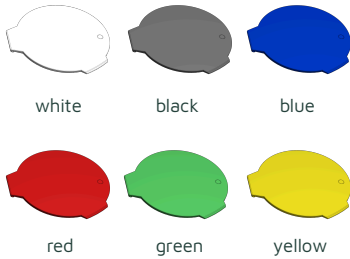


1. Truck with crane.
2. Lift the bag.
3. Empty the bag.

RBin - options and components



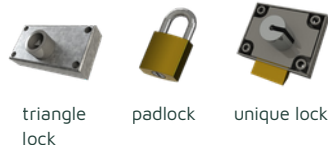
Filling lid color options



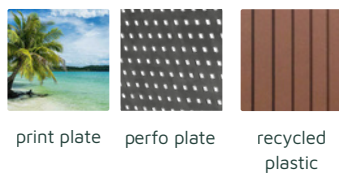
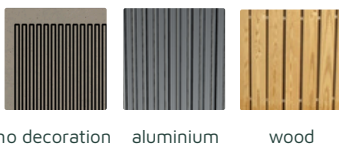
Opening options



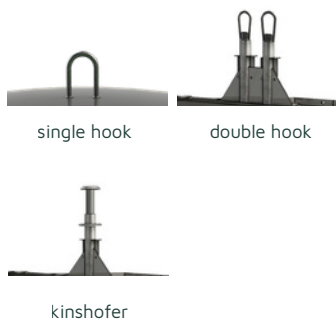
Locking options



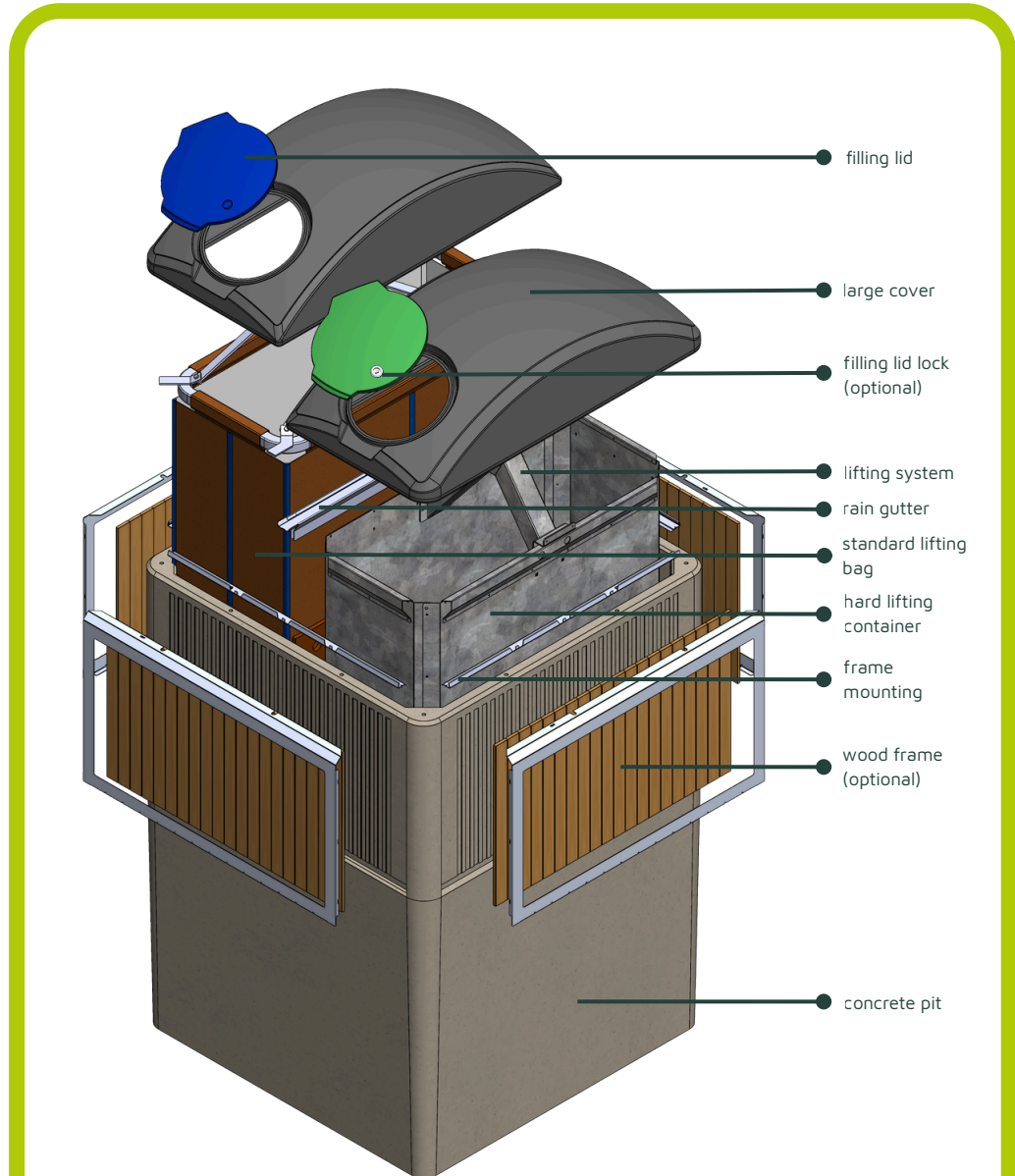
Framing options



Lifting options



Detailed view



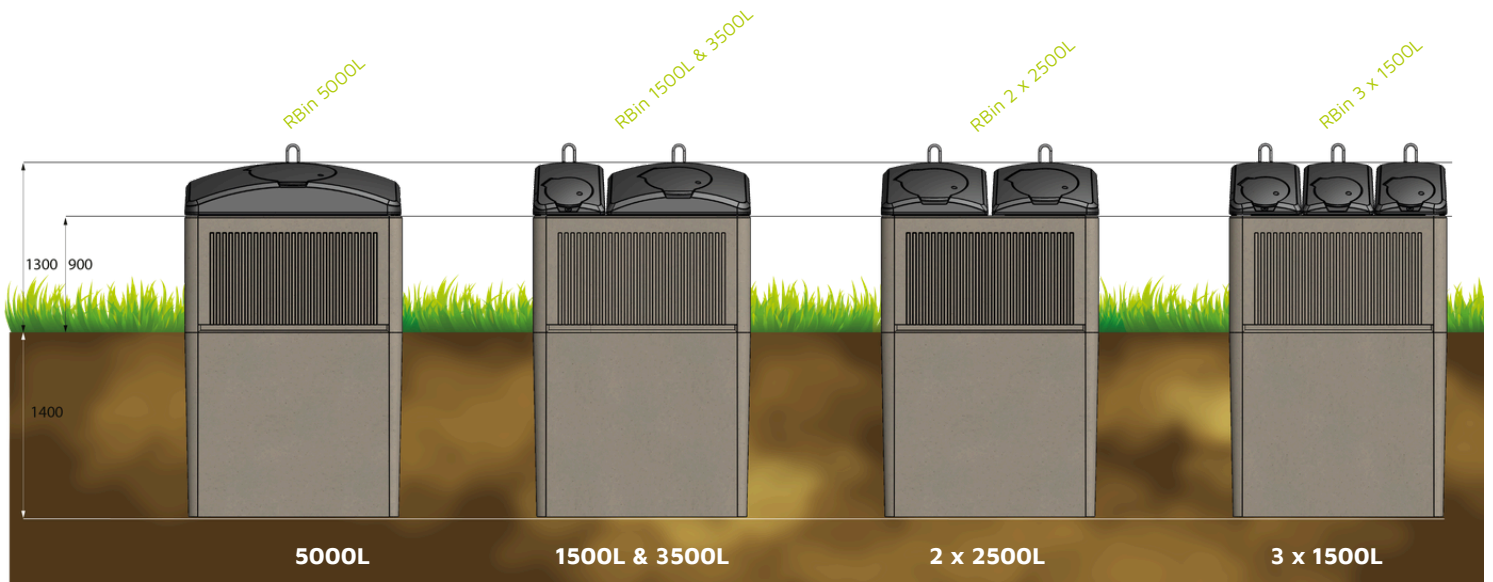
Lifting bags/containers



RBin - product range

TRAFLEX

We believe in the effectiveness of our semi-underground waste solutions. In addition to our ZBin product range, we have developed a robust rectangular concrete solution. The RBin combines the advantages of a durable concrete semi-underground well with a wide variety of functional and aesthetic options.



	5000L	1500L & 3500L	2 x 2500L	3 x 1500L
Height (mm)	2315	2315	2315	2315
Width (mm)	1660	1660	1660	1660
Weight (kg)	2750 kg	2750 kg	2750 kg	2750 kg
Fill volume (m ³)	5 m ³	1.5 m ³ / 3.5 m ³	2 x 2.5 m ³	3 x 1.5 m ³

RBin 5000L

The RBin 5000L container offers our largest volume. The RBin 5000L container features a single fraction installed under the cover, which is lifted as one complete unit.

RBin 1500L & 3500L

If you want to combine smaller and larger volumes, our RBin 1500L & 3500L model is ideal. You can combine 2 different fractions.

RBin 2 x 2500L

Thanks to the large capacity of our RBin concrete well, we can offer two 2500L volumes. With our RBin 2 x 2500L solution, you can combine two different fractions.

RBin 3 x 1500L

If you're looking for the most optimal multifraction container, our RBin 3 x 1500L is the perfect choice. It allows you to combine three different fractions in one container, making it ideal for standalone use and maximum recycling.

TRAFLEX

References

TRAFUX



TRAFUX

TRAFFLUX

YOUR WASTE OUR PASSION

TRAFLUX

Europark 1003, 3530 Houthalen-Helchteren
Belgium

Tel.: +32 11 51 62 70

Mail: info@traflux.com

Website: www.traflux.com

